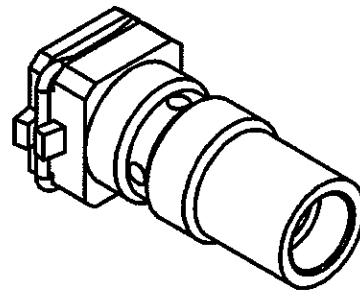
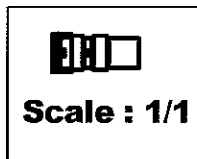
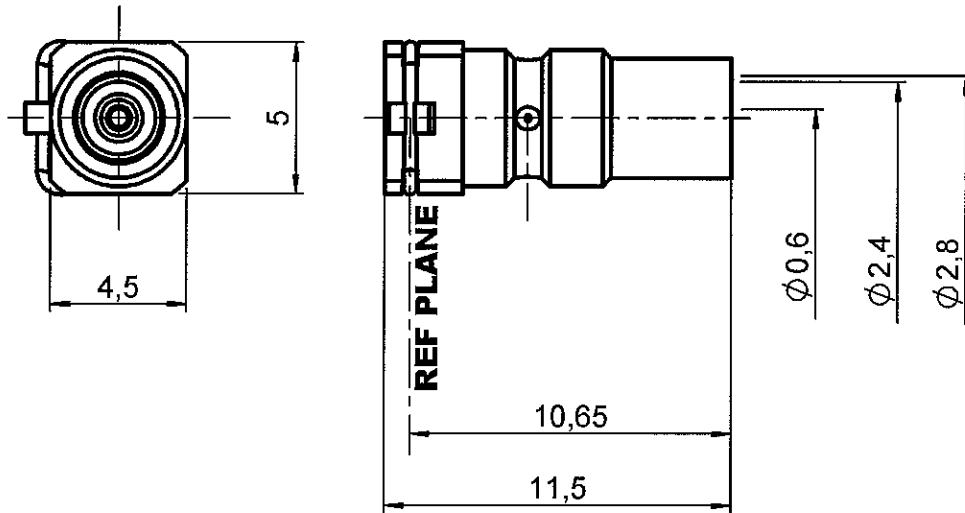


STRAIGHT FEMALE PLUG CRIMP TYPE

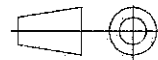
R210.087.000

CABLE 2.6/50 S

Series : MMT



All dimensions are in mm.



| COMPONENTS | MATERIALS | PLATINGS (µm) |
|----------------|------------------|------------------------|
| BODY | BRASS | NICKEL 2 |
| CENTER CONTACT | BERYLLIUM COPPER | GOLD 0.5 OVER NICKEL 2 |
| OUTER CONTACT | - | - |
| INSULATOR | PTFE | - |
| GASKET | - | - |
| OTHERS PARTS | - | - |
| - | - | - |
| - | - | - |

Issue : 0605 A

In the effort to improve our products, we reserve the right to make changes judged to be necessary.



RADIALL®

STRAIGHT FEMALE PLUG CRIMP TYPE

R210.087.000

CABLE 2.6/50 S

Series : MMT

PACKAGING

| Standard | Unit | Other |
|----------|------------|------------|
| 100 | 'W' option | Contact us |

SPECIFICATION

ELECTRICAL CHARACTERISTICS

| | | |
|---------------------------------|--------------|-------------------|
| Impedance | 50 | Ω |
| Frequency | 0-6 | GHz |
| VSWR | 1.1 + 0,0500 | x F(GHz) Maxi |
| Insertion loss | .2 | √F(GHz) dB Maxi |
| RF leakage | -(NA | - F(GHz)) dB Maxi |
| Voltage rating | 170 | Veff Maxi |
| Dielectric withstanding voltage | 500 | Veff mini |
| Insulation resistance | 5000 | MΩ mini |

CABLE ASSEMBLY

| Stripping | a | b | c | d | e | f |
|-----------|------|------|------|------|------|------|
| mm | 2,00 | 2,90 | 5,60 | 0,00 | 3,60 | 0,00 |

Assembly instruction :

Recommended cable(s)
 RG 316
 KX 22A
 RG 188

Cable retention

- pull off 40 N mini
- torque NA N.cm

MECHANICAL CHARACTERISTICS

| | |
|----------------------------|--------------|
| Center contact retention | |
| Axial force – Mating end | 8 N mini |
| Axial force – Opposite end | NA N mini |
| Torque | NA N.cm mini |

TOOLING

| Part Number | Description | Hexagon |
|--------------|---------------|-------------------------|
| R282.271.000 | CRIMPING TOOL | hex:3.25 square 0.72 |

| | |
|--------------------|-----------|
| Recommended torque | |
| Mating | NA N.cm |
| Panel nut | NA N.cm |
| Clamp nut | NA N.cm |
| A/F clamp nut | 0,0000 mm |

OTHERS CHARACTERISTICS

accouplt : 18 N max / desacc.: 7 N min

| | |
|-------------|-----------------|
| Mating life | 500 Cycles mini |
| Weight | 0,9118 g |

ENVIRONMENTAL

| | |
|-----------------------|--------------|
| Operating temperature | -55/+100 °C |
| Hermetic seal | NA Atm.cm3/s |
| Panel leakage | NA |

Issue : 0605 A

In the effort to improve our products, we reserve the right to make changes judged to be necessary.



STRAIGHT FEMALE PLUG CRIMP TYPE

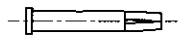
R210.087.000

CABLE 2.6/50 S

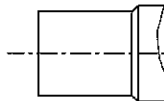
Series : MMT

COMPONENTS

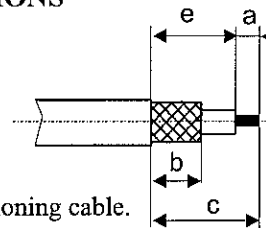
CENTER CONTACT



BODY



STRIPPING DIMENSIONS

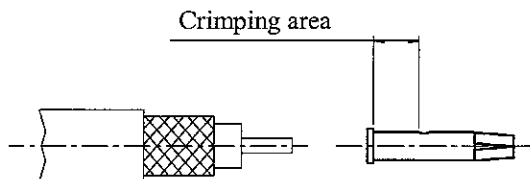


We recommend a thermal preconditioning cable.

« Procedure interne. Seuls les connecteurs câblés par RADIALL sont garantis. »
« Internal procedure. Only plugs assembled by RADIALL are under guarantee »

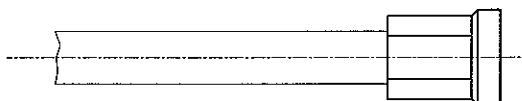
1

Strip the cable.
 Slide the center contact on until it bottoms against the cable dielectric.
 Crimp the center contact with crimping tool (see connector TDS).



2

Crimp the body with crimping tool (see connector TDS).



Issue : 0605 A

In the effort to improve our products, we reserve the right to make changes judged to be necessary.



RADIALL®